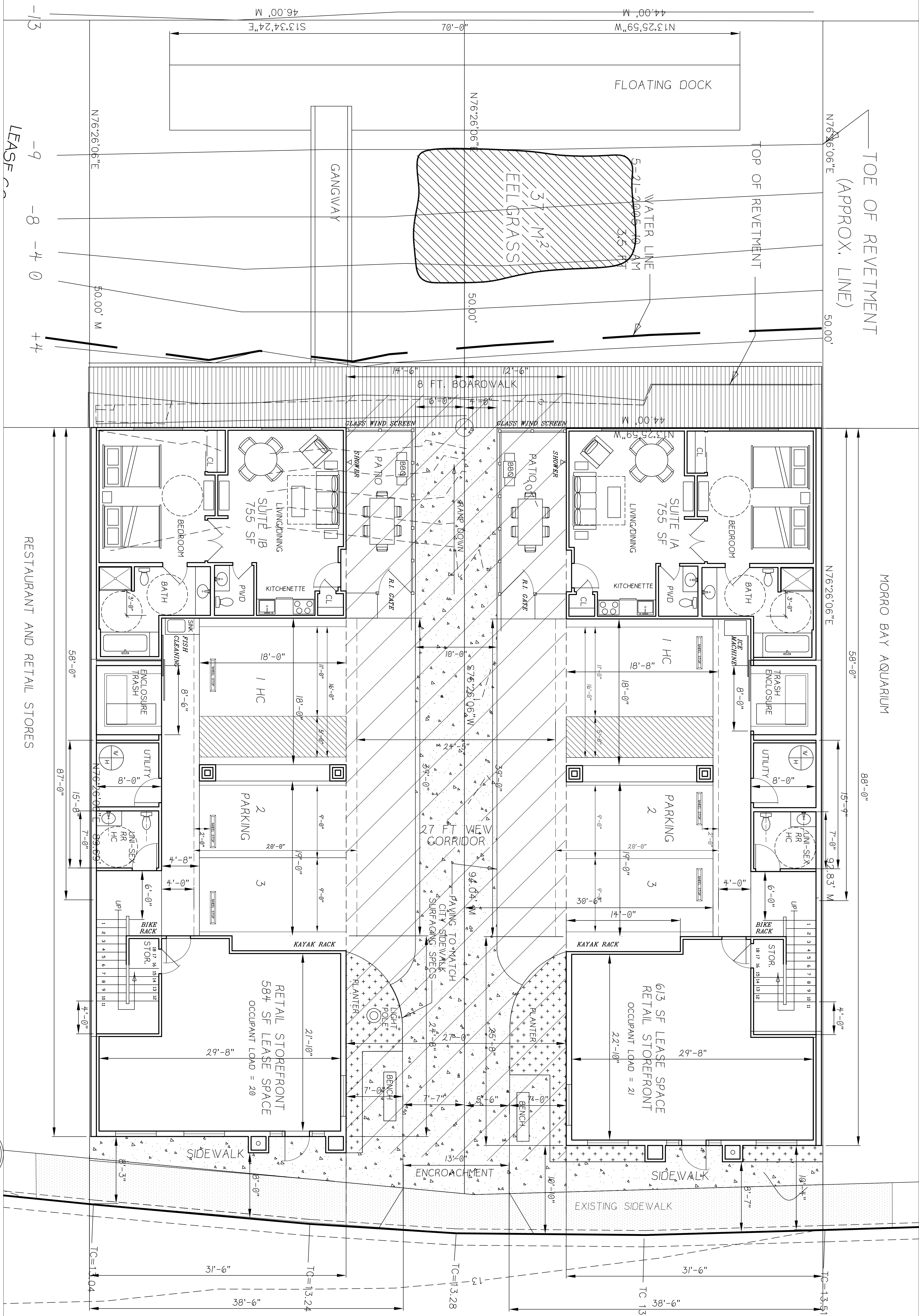


FIRST FLOOR & SITE PLAN



3/16" = 1'-0"

A-1  
OF

0604

FOR  
HELD & O'NEIL  
LEASE SITES 67 & 68

FIRST FLOOR  
& SITE PLAN  
FLOATING DOCK DESIGN 1

REVISED  
COP 12/12/06

MARK L. ALLEN  
DESIGNER  
DRAWN BY  
SANTA YSABEL  
735  
805/534-0507  
BAYWOOD PARK, 92408